

In and about

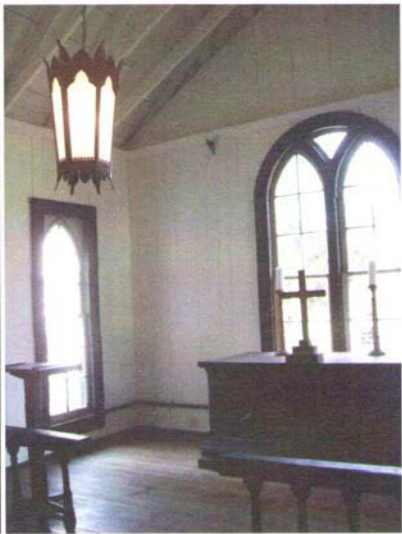
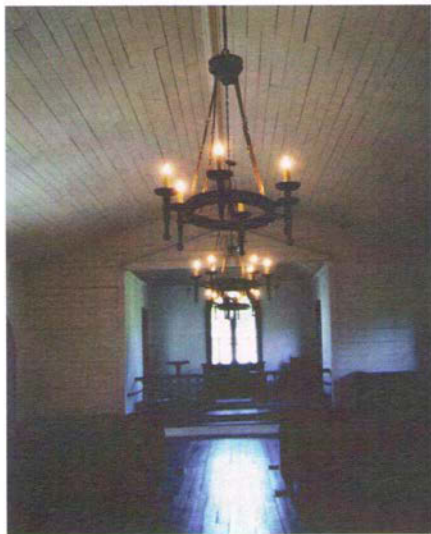
Washington

Volume 3, Number 5

August 2013

FREE—TAKE ONE





Historic lights installed

St. John's Episcopal Church (circa 1874) on Church Street is displaying the Washington Garden Club's latest historic preservation project, period lighting fixtures. The club was assisted with the historic research, selection of the correct style, and acquisition of the fixtures by Washington and New Orleans resident, art and antiques dealer Patrick Dunne and his staff at Lucullus in the French Quarter. Dunne donated the altar fixture in memory of his late grandmother, Jessie Eadie Wells Green (1882-1965).